

# OTDR Report

## Identification Information

Filename: FIBER0001A\_B\_1300.SOR  
 Test date: 19/06/2015  
 Test time: 11:34 (GMT+01:00)  
 Job ID:  
 Comments:

Cable ID:  
 Fiber ID: FIBER0001  
 Customer: Xxxx  
 Company: TECHNORD

### Location A

Location: Aaaa  
 Operator: Tech1  
 Unit model: 400-MDSD-58  
 Unit s/n: 431213  
 Calibration Date: 6/11/2014

### Location B

Location: Bbbb  
 Operator: Tech2  
 Unit model:  
 Unit s/n:  
 Calibration Date:

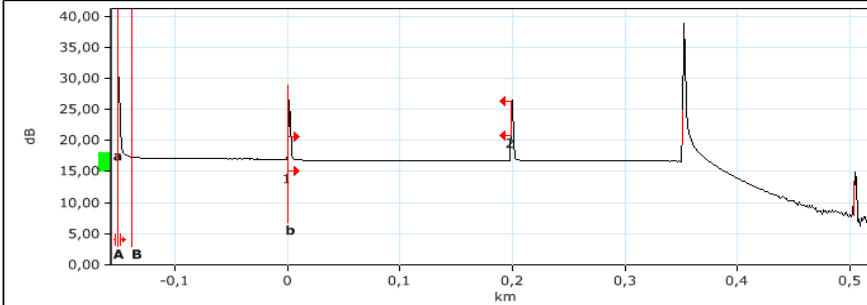
## Test Parameters (1300 nm (62.5 μm))

Range (km): 0.7000      Pulse (ns): 10      Duration (s): 15

## Results (1300 nm)

Span length (km): 0.1985      Span loss (dB): 0.225      Span ORL (dB): 33.36  
 Average loss (dB/km): 1.133      Avg. splice loss (dB): ---      Max. splice loss (dB): ---

## Graphic (1300 nm)



## Event Table (1300 nm)

Type	No.	Location/Length (km)	Loss (dB)	Reflectance (dB)	Attenuation (dB/km)	Cumulative (dB)
Launch Level		-0,1512	---	-28.7		
Section		0,1512	0,181		1,200	
Reflective	1	0,0000	0,168	-38.8		0,168
Section		0,1985	0,113		0,571	0,281
Reflective	2	0,1985	-0,056	-37.3		0,225
Section		0,1522	0,121		0,796	
Reflective		0,3507	---	-13.8		
Section		0,1525	---		---	
Echo		0,5032	---	-44.1		

## Markers Information (1300 nm)

Marker	Position (km)	Value (dB)
a	-0.1512	24.831
A	-0.1512	24.831
B	-0.1378	17.313
b	0.0000	16.986
B-A	0.0134	7.519

## Manual Measurements (1300 nm)

Measurement	Value
4 points event loss (dB)	7.661
A-B LSA loss (dB)	0.016
2 points section att. (dB/km)	*****
A-B LSA attenuation (dB/km)	1.200
3 points reflectance (dB)	-70.9
3 points max. reflectance (dB)	-28.7
A-B ORL (dB)	28.93

## Pass/Fail Thresholds (1300 nm)

Threshold	Fail	Warning
Splice loss (dB)	0.300	0.300
Connector loss (dB)	0.650	0.650
Reflectance (dB)	-25.0	-25.0
Fiber sect. att. (dB/km)	0.600	0.600
Span loss (dB)	---	---
Span length (km)	---	---
Span ORL (dB)	15.00	15.00

# OTDR Report

## Identification Information

Filename: FIBER0001A\_B\_850.SOR Cable ID: Fiber ID: FIBER0001  
 Test date: 19/06/2015 Fiber ID: FIBER0001  
 Test time: 11:34 (GMT+01:00) Customer: Xxx  
 Job ID: Company: TECHNORD  
 Comments:

### Location A

Location: Aaaa  
 Operator: Tech1  
 Unit model: 400-MDSD-58  
 Unit s/n: 431213  
 Calibration Date: 6/11/2014

### Location B

Location: Bbbb  
 Operator: Tech2  
 Unit model:  
 Unit s/n:  
 Calibration Date:

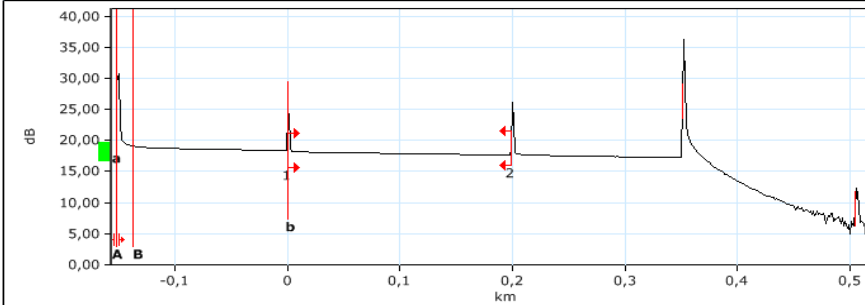
## Test Parameters (850 nm (62.5 μm))

Range (km): 0.7000 Pulse (ns): 10 Duration (s): 15

## Results (850 nm)

Span length (km): 0.1988 Span loss (dB): 0.633 Span ORL (dB): 28.83  
 Average loss (dB/km): 3.185 Avg. splice loss (dB): --- Max. splice loss (dB): ---

## Graphic (850 nm)



## Event Table (850 nm)

Type	No.	Location/Length (km)	Loss (dB)	Reflectance (dB)	Attenuation (dB/km)	Cumulative (dB)
Launch Level		-0,1515	---	-25.5		
Section		0.1515	0.600		3.964	
Reflective	1	0,0000	0,159	-36.9		0.159
Section		0.1988	0.543		2.733	0.702
Reflective	2	0,1988	-0,069	-34.6		0.633
Section		0.1524	0.494		3.240	
Reflective		0,3512	---	-13.7		
Section		0.1530	---		---	
Echo		0,5043	---	-39.8		

## Markers Information (850 nm)

Marker	Position (km)	Value (dB)
a	-0.1515	24.236
A	-0.1515	24.236
B	-0.1374	19.093
b	0.0000	18.370
B-A	0.0141	5.144

## Manual Measurements (850 nm)

Measurement	Value
4 points event loss (dB)	5.305
A-B LSA loss (dB)	0.063
2 points section att. (dB/km)	*****
A-B LSA attenuation (dB/km)	4.500
3 points reflectance (dB)	-62.7
3 points max. reflectance (dB)	-25.5
A-B ORL (dB)	25.02

## Pass/Fail Thresholds (850 nm)

Threshold	Fail	Warning
Splice loss (dB)	0.300	0.300
Connector loss (dB)	0.650	0.650
Reflectance (dB)	-25.0	-25.0
Fiber sect. att. (dB/km)	3.500	3.500
Span loss (dB)	---	---
Span length (km)	---	---
Span ORL (dB)	15.00	15.00